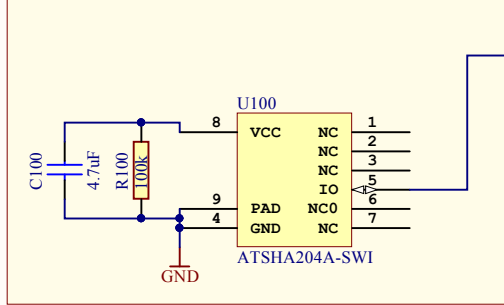
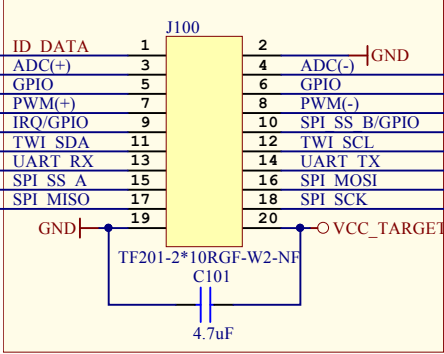


Extension Identification

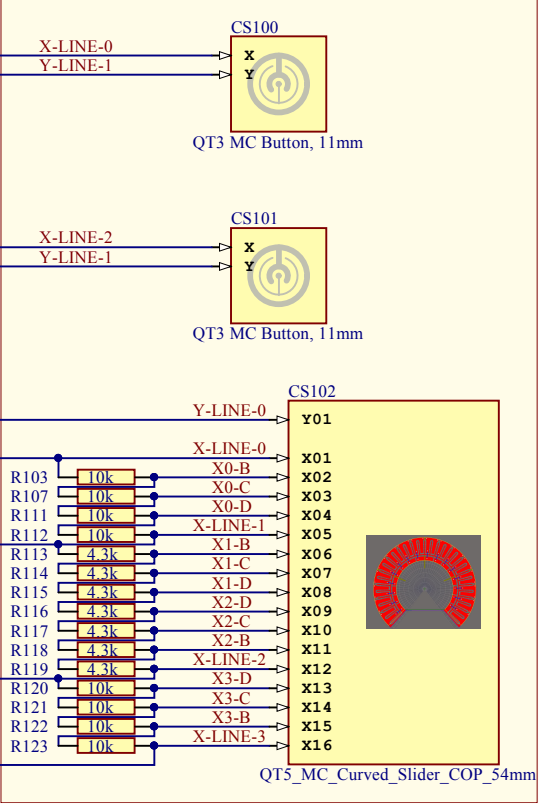


[DESIGN NOTE]  
The ATSHA204 is powered through an IO Pin from the EDBG on an MCU board. R100 is present to drain the capacitor C100 when power is removed from an MCU board.

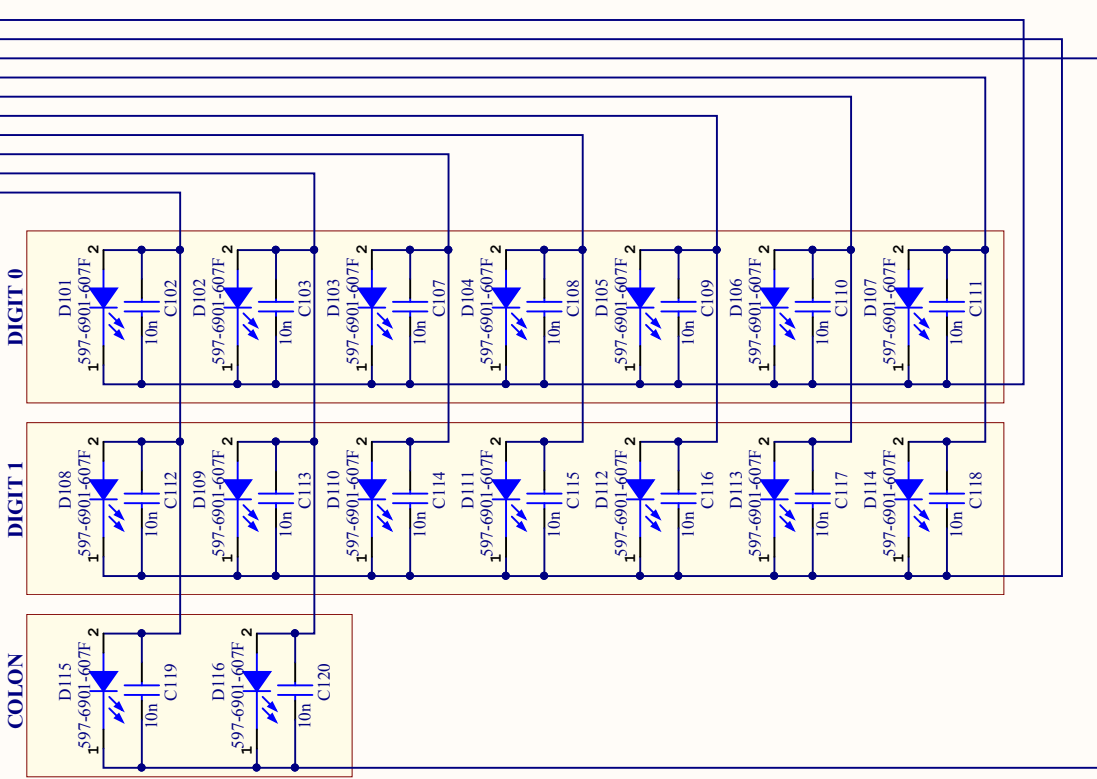
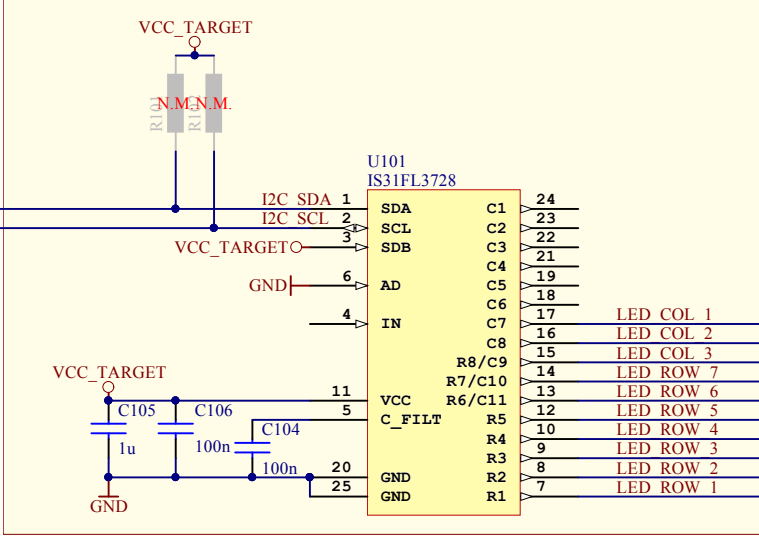
Standard Extension Header (Female)



QTouch sensors

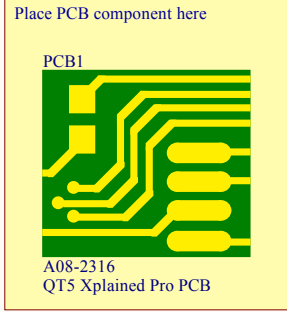



LED Matrix driver



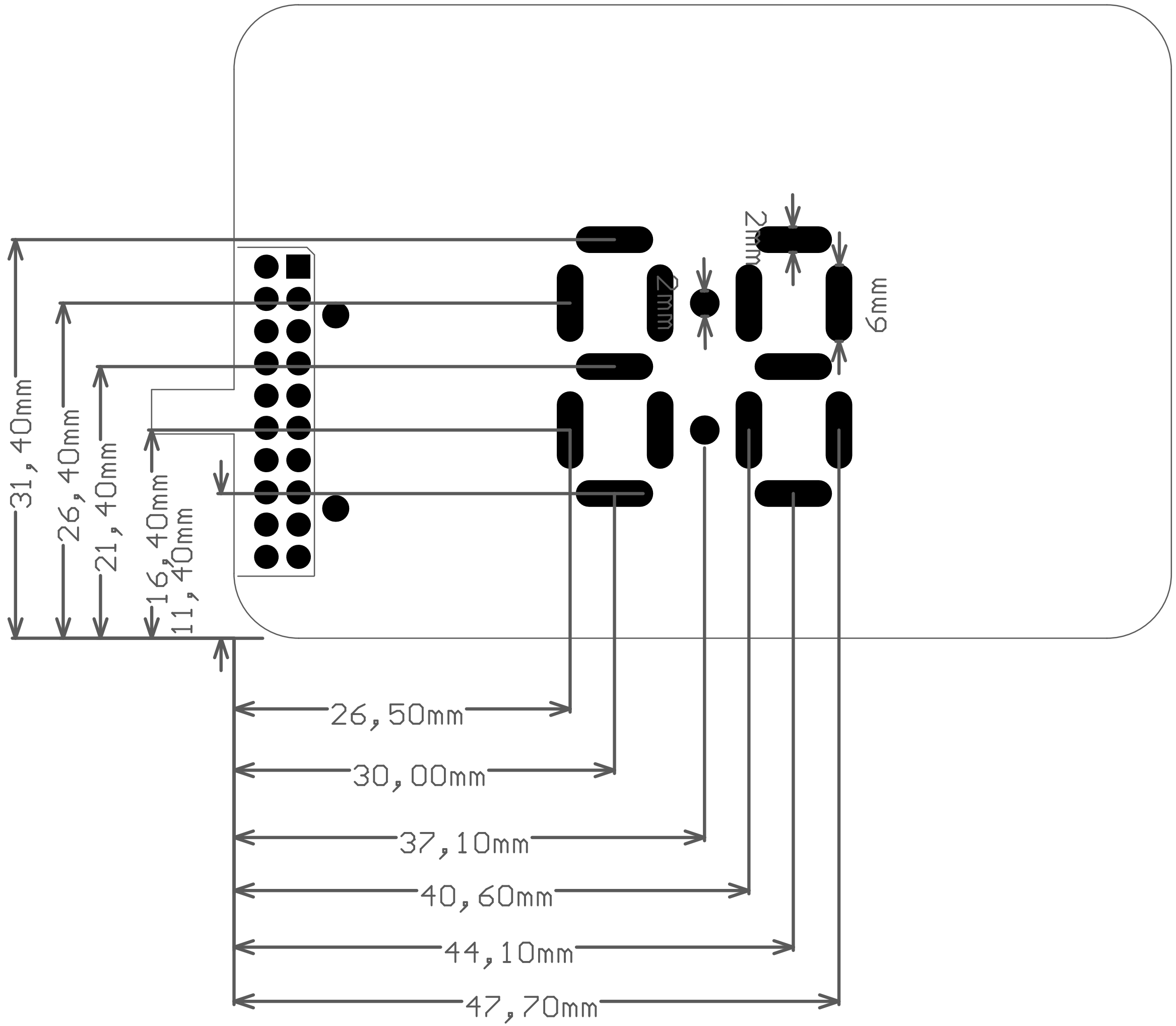
Label1  
Product number/revision  
Serial number

Label PCBA



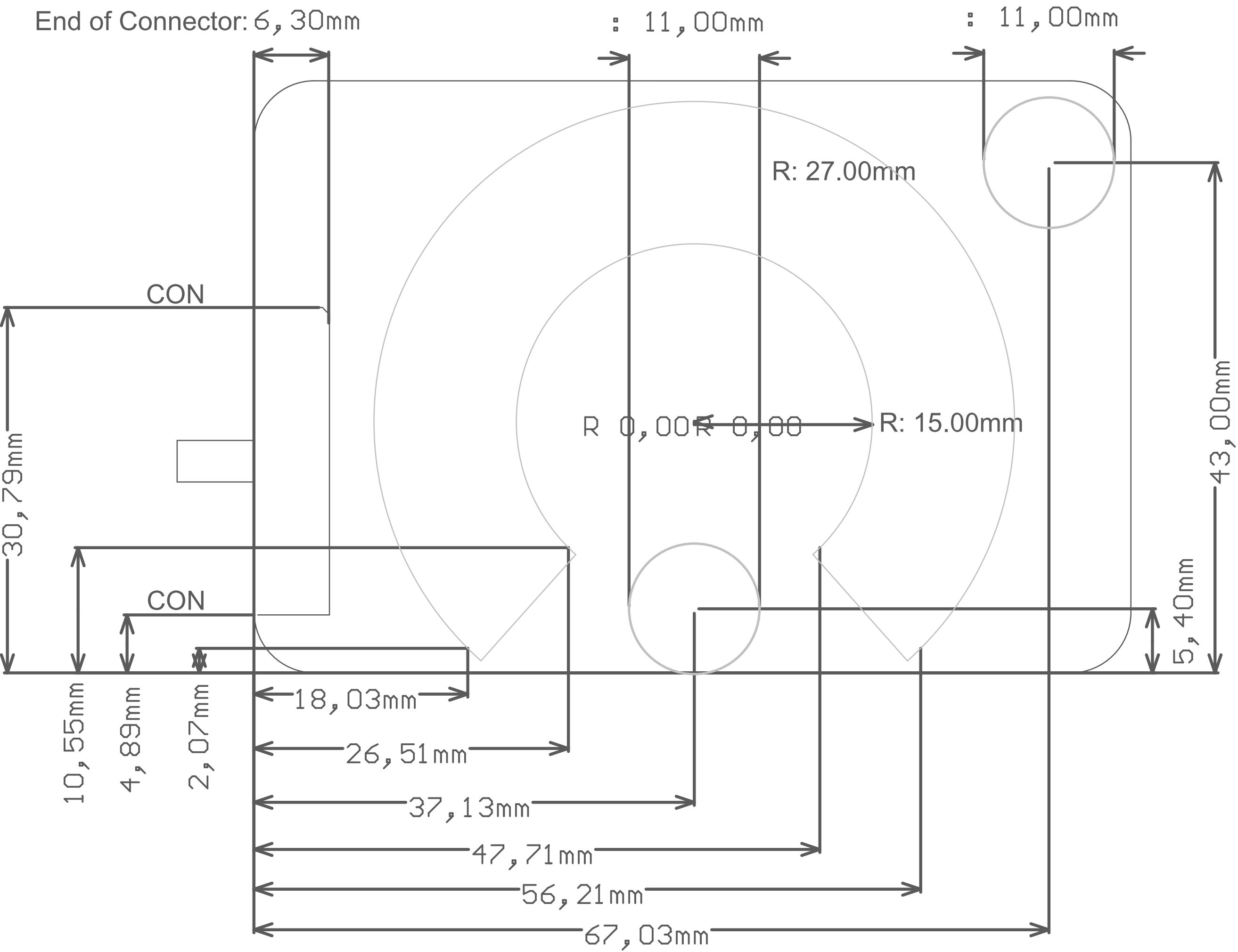
ATMEL Norway	*			
Vestre Rosten 79	*			
N-7075 Tiller	*			
Norway				
Date:	09.12.2015	16:09:16	PAGE:	1 of 1
Document number:	A09-2494	Revision	3	
TITLE: Connectors				
QTS_Xplained_Pro.SchDoc				

# LED slot Dimensions and Placement

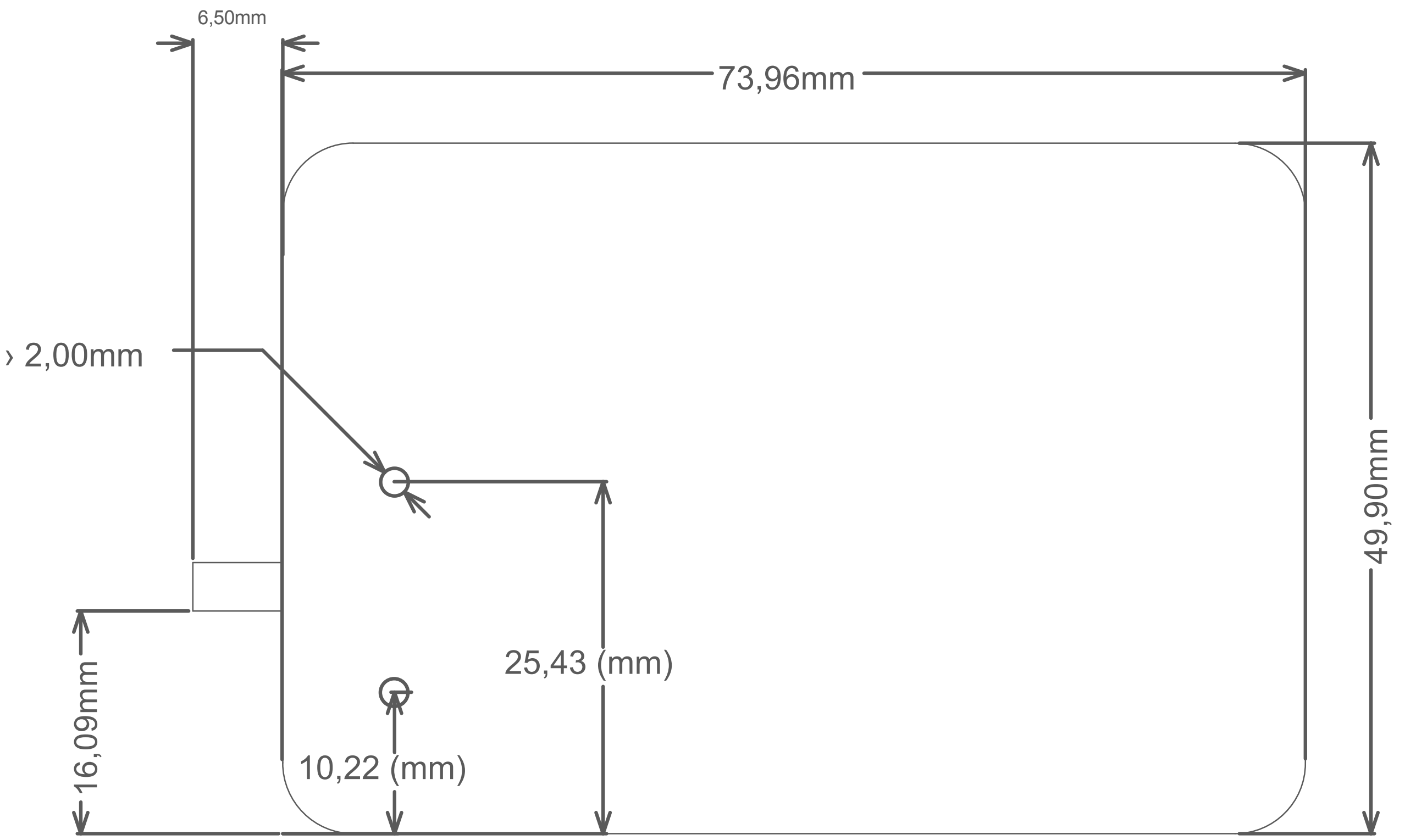


# Sensor Size and Placement

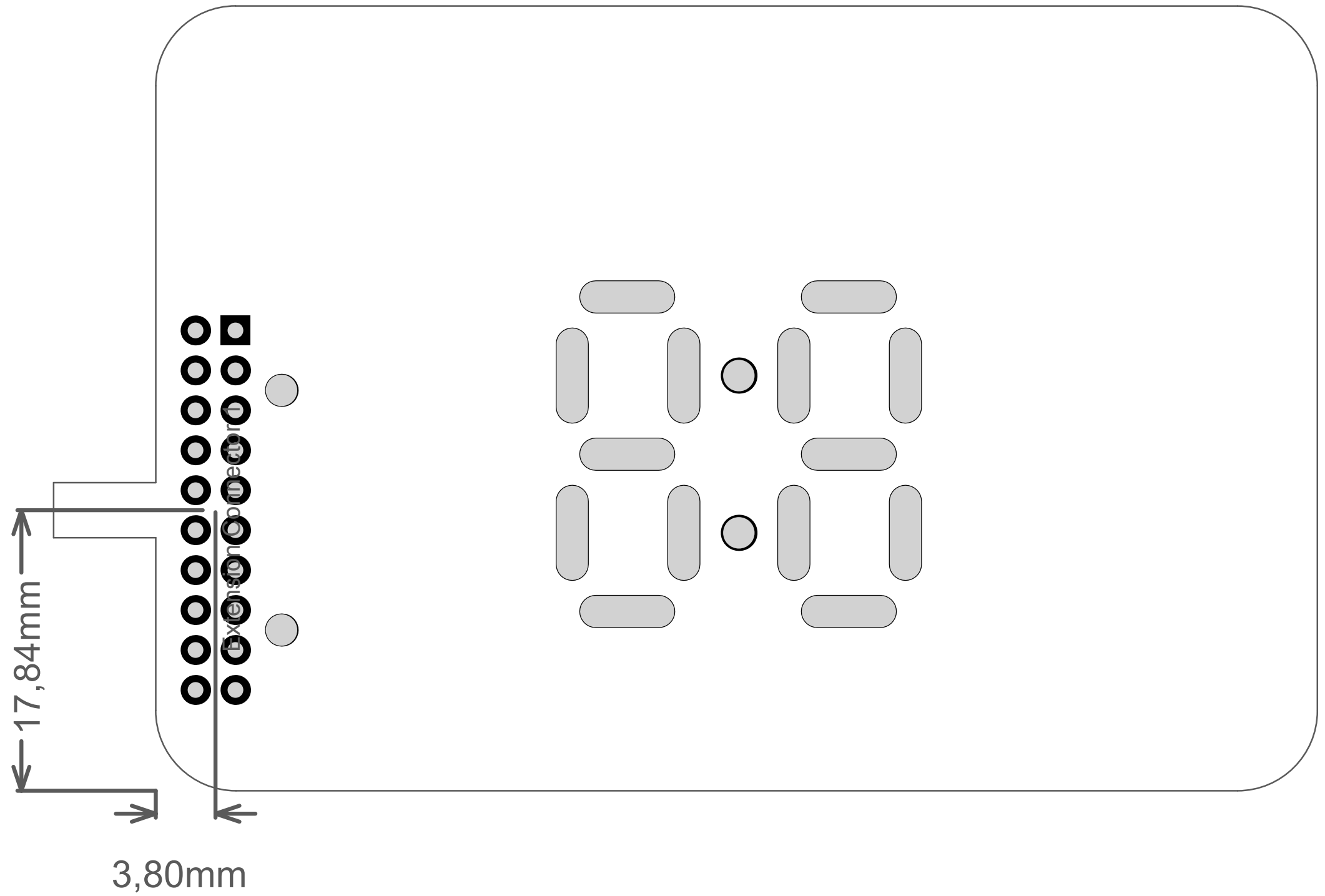
Curved Slider sensor angular size: 270°

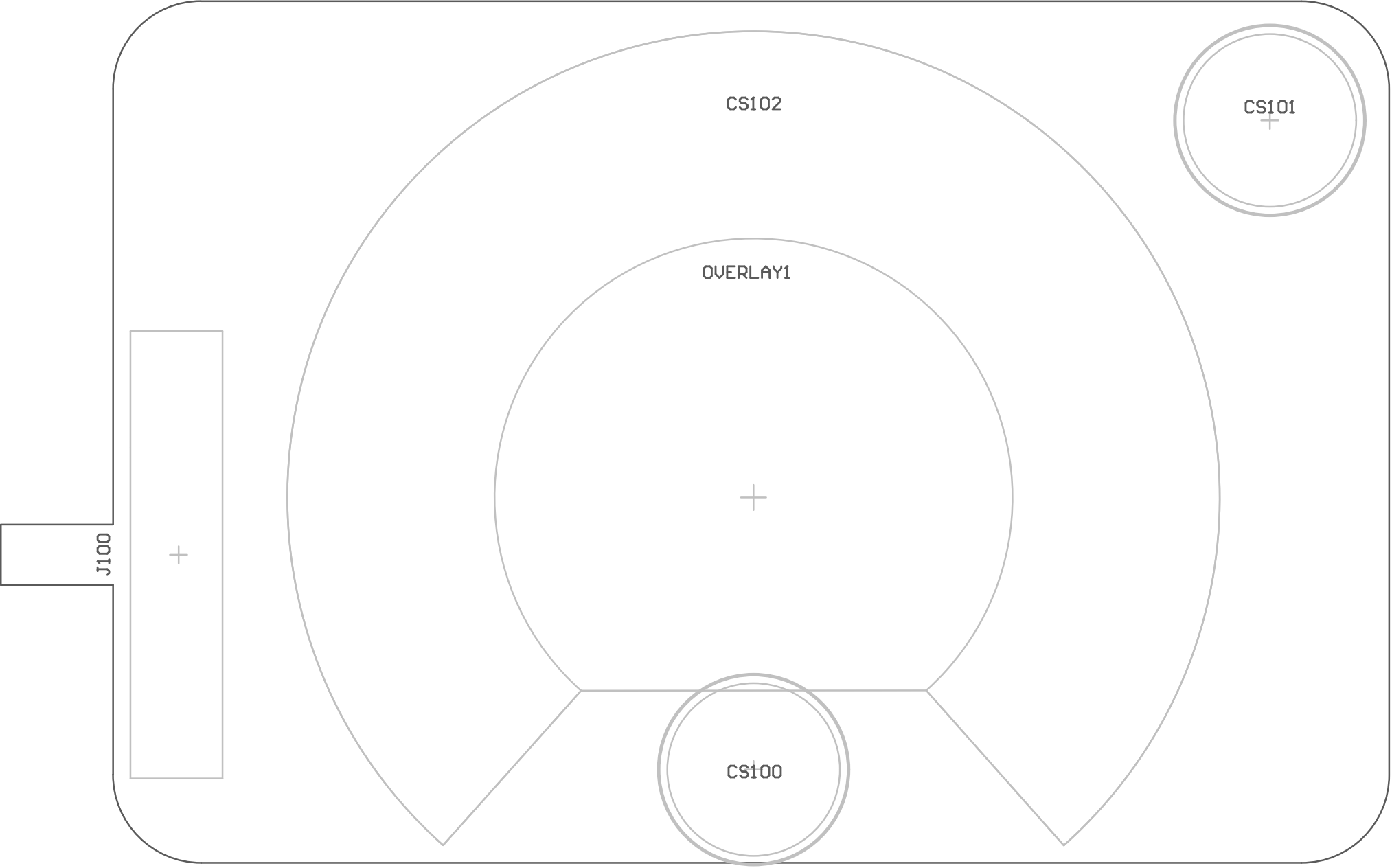


# Mechanical Dimensions



# Connector Placement







PCB LABEL  
A08-2316 Rev 3



E1

E2

Atmel Corp © 2015

# Atmel

## QT5 X PLAINED PRO

R118

R117

R116

R115

R114

R119

R120

R121

R122

R123

R110

U100  
R100  
C100

R106

R113

R108

R112  
R109

R104

R111

R107

R103

R105

ID

Y0

X0

X2

SDA

---

---

---

---

Y1

X1

X3

SCL

---

---

GND

VCC

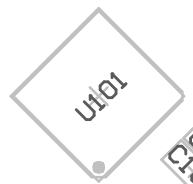
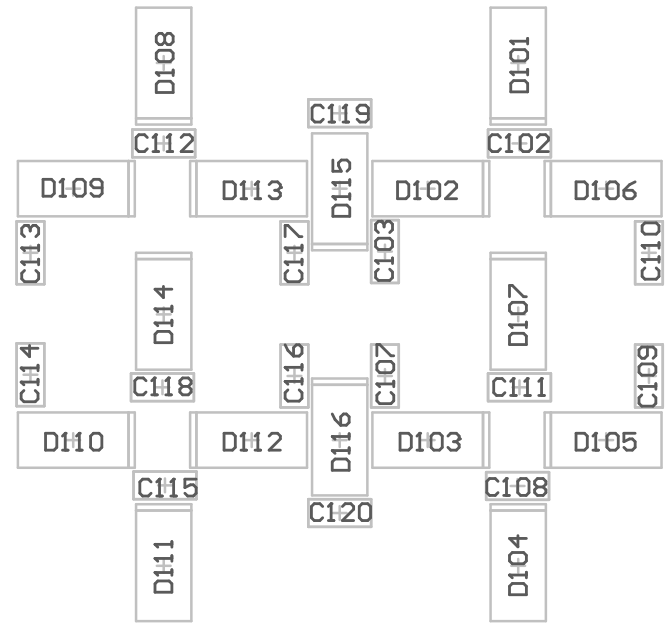
1

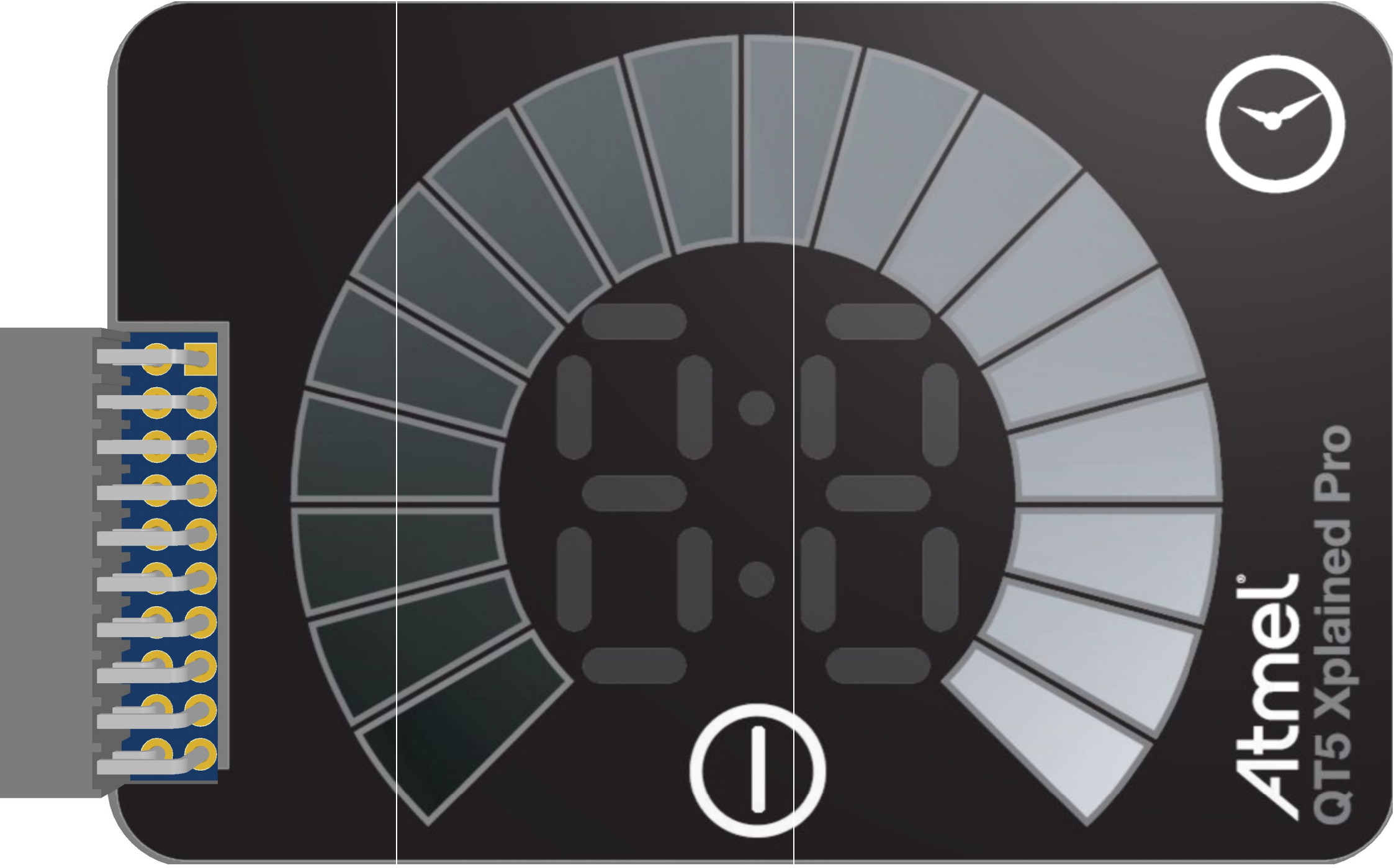
2

GND

C101

EXT1

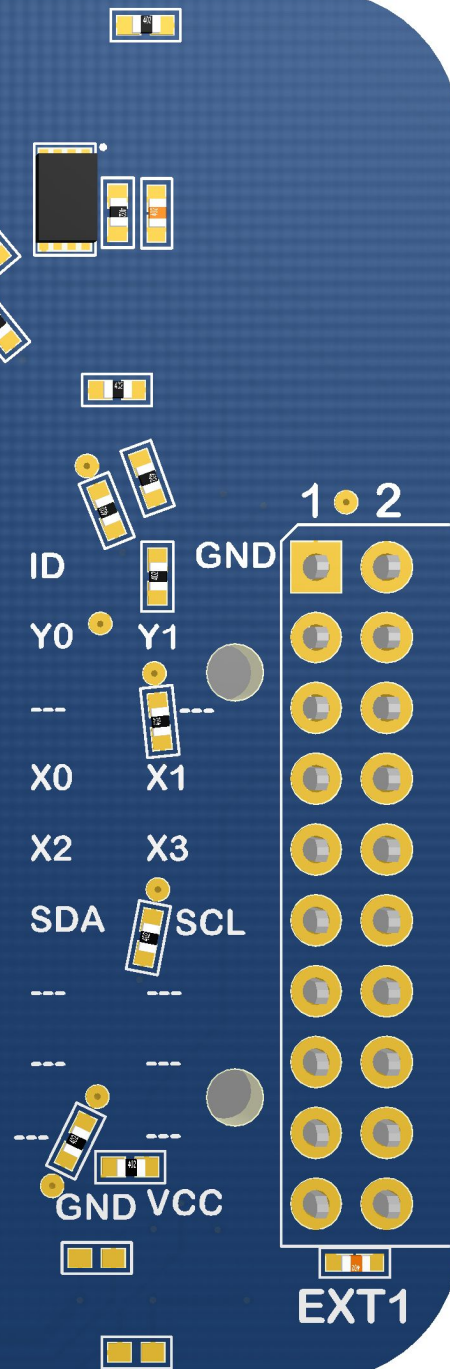
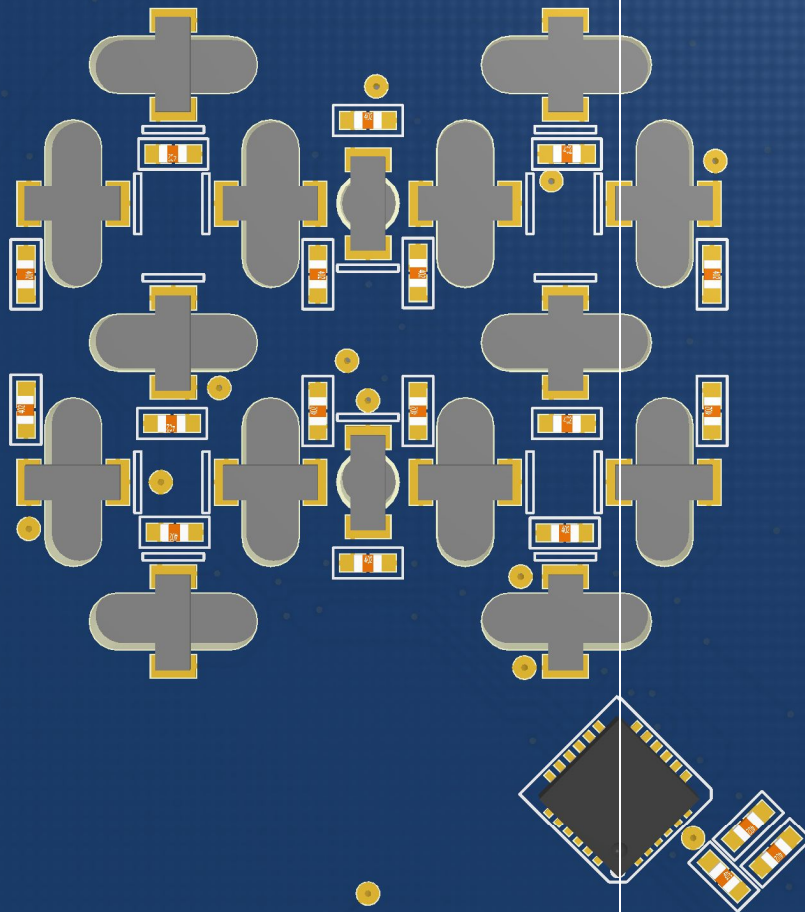






# Atmel

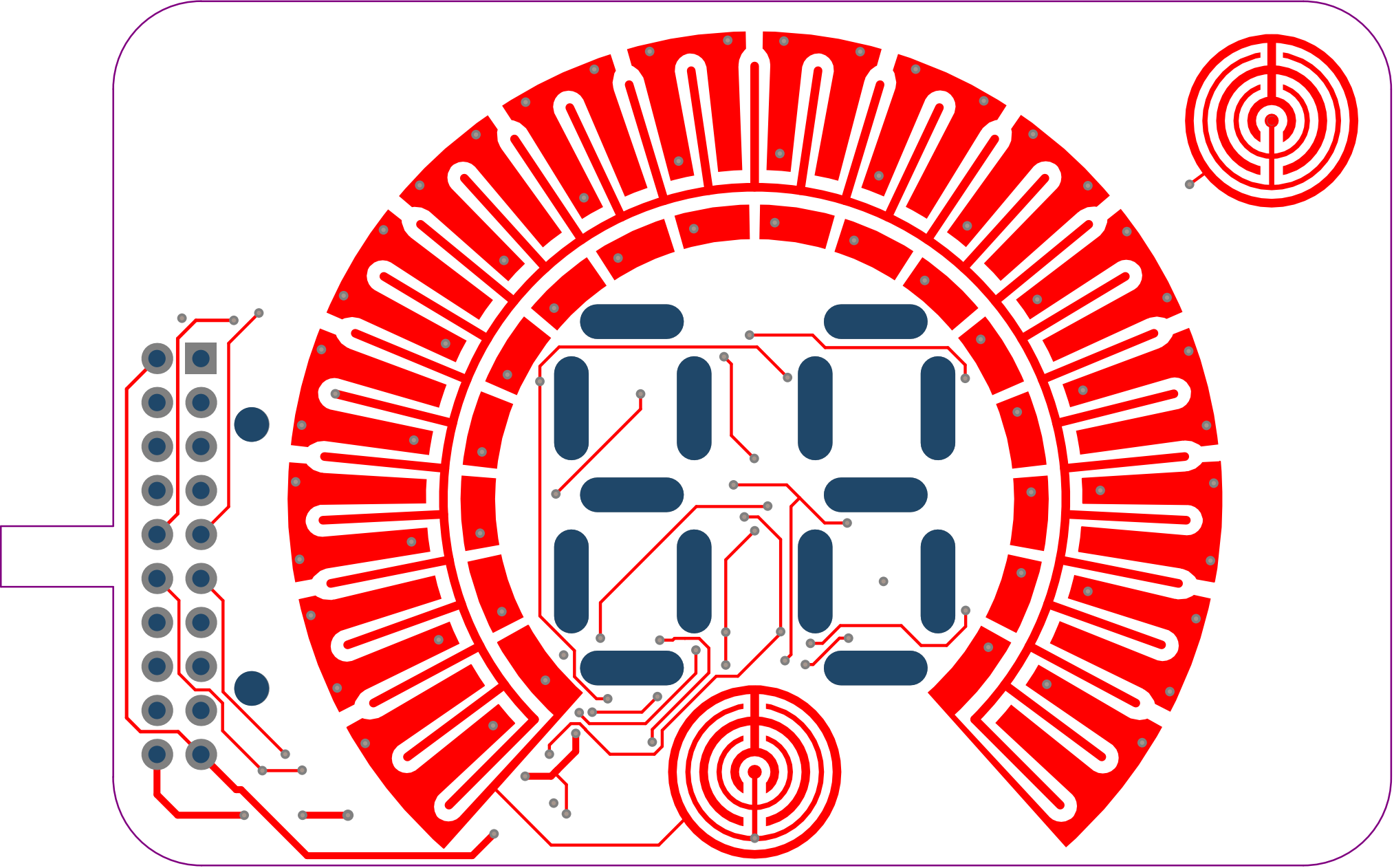
## QT5 X PLAINED PRO

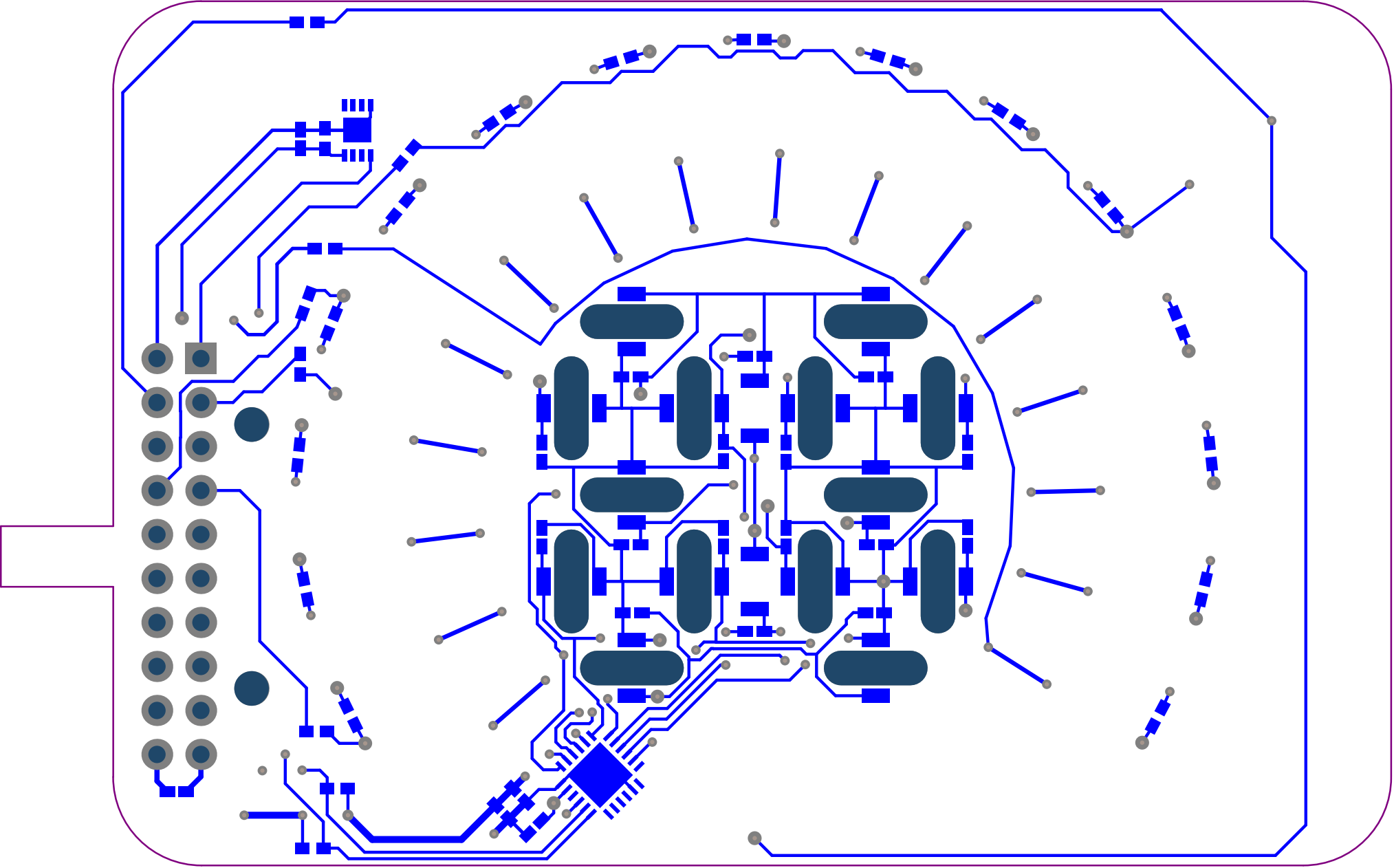


PCBA LABEL  
A08-2316 Rev 3

Atmel Corp © 2015







# Component list

Bill of Materials Fitted For Variant [Default\_assembly] of Project [QT5\_Xplained\_Pro.PrjPCB] (No PCB Document Selected)

Source Data From:

QT5\_Xplained\_Pro.PrjPCB

Project:

QT5\_Xplained\_Pro.PrjPCB

Variant:

Default\_assembly



Report Date: 09.12.2015 16:09:26

Print Date: 09.12.2015 16:05:09

Fitted	Designator	Quantity	Value	Manufacturer	MPN	Description
Fitted	C100, C101	2	4.7uF	Murata	GRM155R60J475ME87D	Ceramic capacitor, SMD 0402, X5R, 6.3V, +/-20% (de33687)
Fitted	C102, C103, C107, C108, C109, C110, C111, C112, C113, C114, C115, C116, C117, C118, C119, C120	16	10n			Ceramic capacitor, SMD 0402, X7R, 25V, +/-10%
Fitted	C104, C106	2	100n	Kemet	C0402C104K4RACTU	Ceramic capacitor, SMD 0402, X7R, 16V, +/-10%
Fitted	C105	1	1u	Kemet	C0402C105K9PAC	Ceramic capacitor, SMD 0402, X5R, 6.3V, +/-10% (de26942)
Fitted	D101, D102, D103, D104, D105, D106, D107, D108, D109, D110, D111, D112, D113, D114, D115, D116	16	597-6901-607F	Dialight	597-6901-607F	1206 White LED, reverse SMD mount, 100mcd, 70A° view angle
Fitted	E1, E2	2	SJ-5076	3M	SJ-5076	2.8mm adhesive feet, diam 8.0mm
Fitted	FIXTURE1	1	Xplained PRO Extension board Jupiter Test Fixture	ESCA TEC	Xplained PRO Extension board Jupiter Test Fixture	Xplained PRO Extension board Jupiter Test Fixture
Fitted	J100	1	TF201-2*10RGF-W2-NF	Pro-data International Corp	F201-2*10RGF-W2-NF	2x10, female pin header receptable, right-angled, 2.54mm pitch, THM, Pin In Paste
Fitted	LABEL1	1	Label PCBA	ACT Logimark AS	505462	PCBA identification label PP Top White Gloss
Fitted	OVERLAY1	1	QT5-XPRO Overlay	PS Serigraf AS	PS201528	Polycarbonate, 73.96mm x 49.90mm x 1.0mm (WxHxD), w/adhesive, overlay for QT5 Xplained Pro kit
Fitted	PCB1	1	QT5 Xplained Pro PCB			QT5 Xplained Pro extension kit PCB
Fitted	PCBADOC1	1	QT5 Xplained pro PCBA Documentation			QT5 Xplained pro extension kit PCBA Documentation
Fitted	R100	1	100k			Thick film resistor, SMD 0402, 1/16W, 1%
Fitted	R103, R107, R111, R112, R120, R121, R122, R123	8	10k	vishay	CRCW040210K0FKED	Thick film resistor, SMD 0402, 1/16W, 1%
Fitted	R104, R105, R106, R108, R109, R110	6	1k			Thick film resistor, SMD 0402, 1/16W, 1%
Fitted	R113, R114, R115, R116, R117, R118, R119	7	4.3k			Thick film resistor, SMD 0402, 1/16W, 1%
Fitted	TEST1	1	QT5 Xplained Pro test software			Fixture eggTest for QT5 Xplained Pro
Fitted	TESTDOC1	1	QT5 Xplained Pro Test Documentation			QT5 Xplained Pro Test Documentation
Fitted	U100	1	ATSHA204 SWI UDFN8	ATMEL	ATSHA204A-MAHCZ-T	ATSHA204 with 1-wire interface and UDFN8 package
Fitted	U101	1	IS31FL3728			64 node LED matrix driver, I2C, 2.7 - 5.5V
Not Fitted	R101, R102	0	4.7k			Thick film resistor, SMD 0402, 1/16W, 1%
		71				

Approved

Notes